

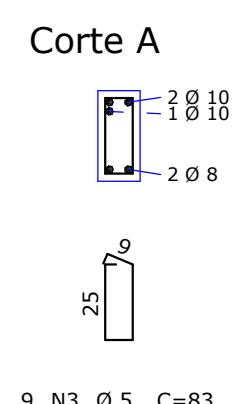
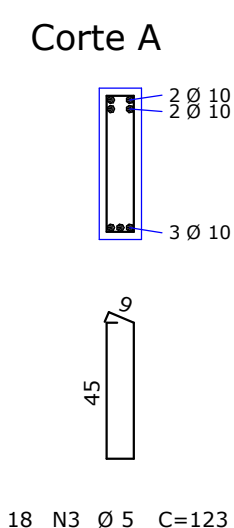
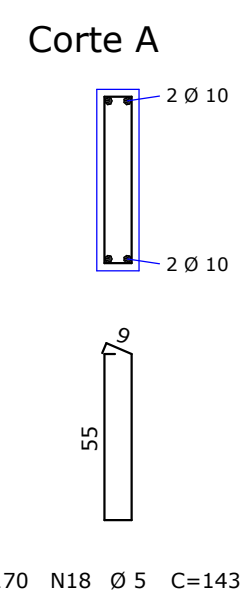
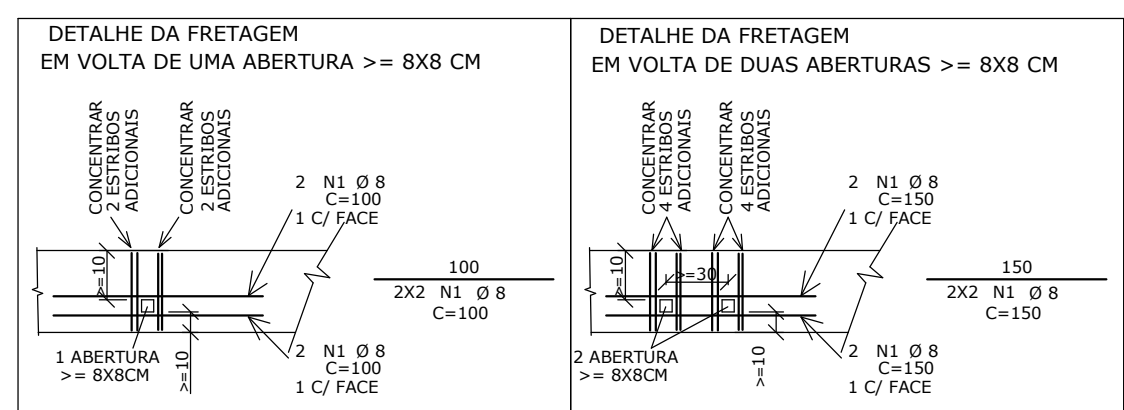
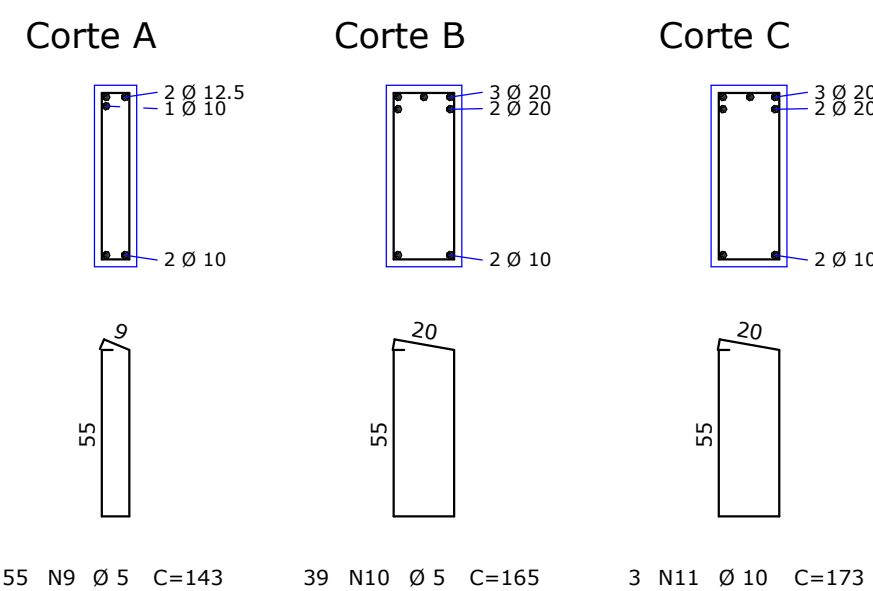
Technical drawing of a bridge deck cross-section showing reinforcement details. The drawing includes a top view of the deck with reinforcement bars (B13B, B14B, B15B, B16B) and a side view showing the deck profile and reinforcement bars (N1, N2, N3, N4, N5, N6, N7, N8). Dimensions are provided for various parts of the deck, including lengths, widths, and reinforcement bar spacing.

Top View Details:

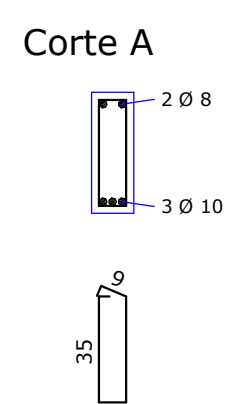
- Reinforcement bars: B13B, B14B, B15B, B16B
- Dimensions: 14x60, 34 Ø 5.5 C12 (N1), 2 Ø 12.5 + 1 Ø 10, 2 Ø 12.5 + 1 Ø 10, 2 Ø 12.5 + 1 Ø 10, 3 Ø 10 C12 (N2), 5 Ø 30, 3 Ø 10 C12 (N3), 5 Ø 30, 2 Ø 10, 138, 2 Ø 10, 96, 148, 2 N1 Ø 6.3 C=375, 1 N4 Ø 10 (1 Ø 24C40), 139, 2 N3 Ø 12.5 C=850, 2 N7 Ø 10 C=488, 2 N6 Ø 10 C=762, 2 N8 Ø 10 C=514, 494, 513, 5 Ø 5 Ø 20 C=613, (2 Ø 24C40), R=15, R=15

Side View Details:

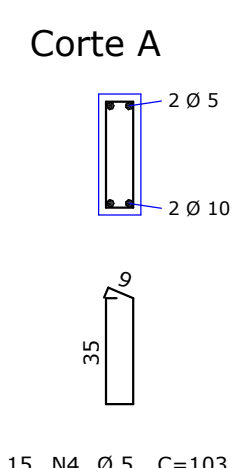
- Reinforcement bars: N1, N2, N3, N4, N5, N6, N7, N8
- Dimensions: 14x60, 34 Ø 5.5 C12 (N1), 2 Ø 12.5 + 1 Ø 10, 2 Ø 12.5 + 1 Ø 10, 2 Ø 12.5 + 1 Ø 10, 3 Ø 10 C12 (N2), 5 Ø 30, 3 Ø 10 C12 (N3), 5 Ø 30, 2 Ø 10, 138, 2 Ø 10, 96, 148, 2 N1 Ø 6.3 C=375, 1 N4 Ø 10 (1 Ø 24C40), 139, 2 N3 Ø 12.5 C=850, 2 N7 Ø 10 C=488, 2 N6 Ø 10 C=762, 2 N8 Ø 10 C=514, 494, 513, 5 Ø 5 Ø 20 C=613, (2 Ø 24C40), R=15, R=15



Technical drawing of a bridge deck cross-section showing reinforcement details. The top part shows the deck profile with reinforcement bars (V135B, V139B, V141B, V147B, V15) and stirrups (B110B, B111B). The bottom part shows the reinforcement layout for the deck, including longitudinal bars (N1, N2, N3, N4, N5, N6, N8, N9, N10) and transverse bars (C=577, C=840, C=790, C=220, C=355, C=520, C=580, C=810, C=425). Dimensions are given in millimeters.



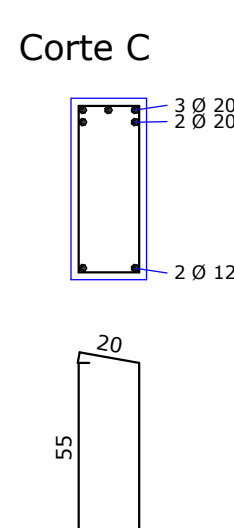
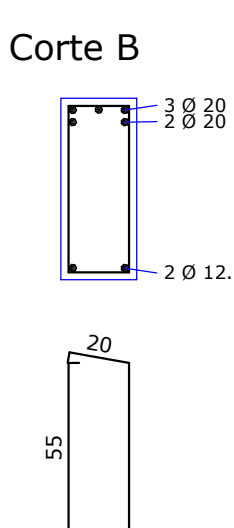
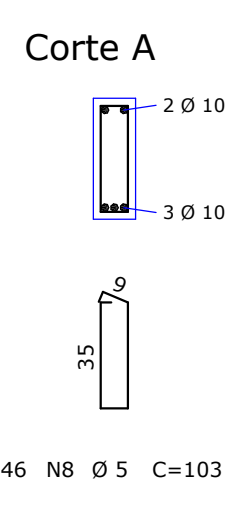
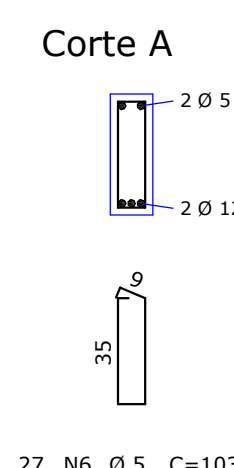
RESUMO DE AÇO			
AÇO	BIT mm	COMPR m	PESO kgf
60B	5	966	149
50A	6,3	27	7
50A	8	81	32
50A	10	595	367
50A	12,5	65	63
50A	20	61	153
Peso Total	60B =		149 kgf
Peso Total	50A =		620 kgf



Technical drawing of a bridge deck cross-section showing reinforcement details for a 14x40 structure. The drawing includes dimensions for concrete and reinforcement, and labels for various reinforcement bars and their quantities.

Key dimensions and labels:

- Overall width: 14x40
- Reinforcement bars: 3 N1 Ø 12.5, 2 N2 Ø 10, 3 N3 Ø 12.5, 3 N4 Ø 12.5, 3 N5 Ø 12.5, 3 N6 Ø 10, 3 N7 Ø 12.5, 3 N8 Ø 12.5, 3 N9 Ø 12.5, 3 N10 Ø 12.5, 3 N11 Ø 12.5, 3 N12 Ø 12.5, 3 N13 Ø 12.5, 3 N14 Ø 12.5, 3 N15 Ø 12.5, 3 N16 Ø 12.5, 3 N17 Ø 12.5, 3 N18 Ø 12.5, 3 N19 Ø 12.5, 3 N20 Ø 12.5, 3 N21 Ø 12.5, 3 N22 Ø 12.5, 3 N23 Ø 12.5, 3 N24 Ø 12.5, 3 N25 Ø 12.5, 3 N26 Ø 12.5, 3 N27 Ø 12.5, 3 N28 Ø 12.5, 3 N29 Ø 12.5, 3 N30 Ø 12.5, 3 N31 Ø 12.5, 3 N32 Ø 12.5, 3 N33 Ø 12.5, 3 N34 Ø 12.5, 3 N35 Ø 12.5, 3 N36 Ø 12.5, 3 N37 Ø 12.5, 3 N38 Ø 12.5, 3 N39 Ø 12.5, 3 N40 Ø 12.5, 3 N41 Ø 12.5, 3 N42 Ø 12.5, 3 N43 Ø 12.5, 3 N44 Ø 12.5, 3 N45 Ø 12.5, 3 N46 Ø 12.5, 3 N47 Ø 12.5, 3 N48 Ø 12.5, 3 N49 Ø 12.5, 3 N50 Ø 12.5, 3 N51 Ø 12.5, 3 N52 Ø 12.5, 3 N53 Ø 12.5, 3 N54 Ø 12.5, 3 N55 Ø 12.5, 3 N56 Ø 12.5, 3 N57 Ø 12.5, 3 N58 Ø 12.5, 3 N59 Ø 12.5, 3 N60 Ø 12.5, 3 N61 Ø 12.5, 3 N62 Ø 12.5, 3 N63 Ø 12.5, 3 N64 Ø 12.5, 3 N65 Ø 12.5, 3 N66 Ø 12.5, 3 N67 Ø 12.5, 3 N68 Ø 12.5, 3 N69 Ø 12.5, 3 N70 Ø 12.5, 3 N71 Ø 12.5, 3 N72 Ø 12.5, 3 N73 Ø 12.5, 3 N74 Ø 12.5, 3 N75 Ø 12.5, 3 N76 Ø 12.5, 3 N77 Ø 12.5, 3 N78 Ø 12.5, 3 N79 Ø 12.5, 3 N80 Ø 12.5, 3 N81 Ø 12.5, 3 N82 Ø 12.5, 3 N83 Ø 12.5, 3 N84 Ø 12.5, 3 N85 Ø 12.5, 3 N86 Ø 12.5, 3 N87 Ø 12.5, 3 N88 Ø 12.5, 3 N89 Ø 12.5, 3 N90 Ø 12.5, 3 N91 Ø 12.5, 3 N92 Ø 12.5, 3 N93 Ø 12.5, 3 N94 Ø 12.5, 3 N95 Ø 12.5, 3 N96 Ø 12.5, 3 N97 Ø 12.5, 3 N98 Ø 12.5, 3 N99 Ø 12.5, 3 N100 Ø 12.5, 3 N101 Ø 12.5, 3 N102 Ø 12.5, 3 N103 Ø 12.5, 3 N104 Ø 12.5, 3 N105 Ø 12.5, 3 N106 Ø 12.5, 3 N107 Ø 12.5, 3 N108 Ø 12.5, 3 N109 Ø 12.5, 3 N110 Ø 12.5, 3 N111 Ø 12.5, 3 N112 Ø 12.5, 3 N113 Ø 12.5, 3 N114 Ø 12.5, 3 N115 Ø 12.5, 3 N116 Ø 12.5, 3 N117 Ø 12.5, 3 N118 Ø 12.5, 3 N119 Ø 12.5, 3 N120 Ø 12.5, 3 N121 Ø 12.5, 3 N122 Ø 12.5, 3 N123 Ø 12.5, 3 N124 Ø 12.5, 3 N125 Ø 12.5, 3 N126 Ø 12.5, 3 N127 Ø 12.5, 3 N128 Ø 12.5, 3 N129 Ø 12.5, 3 N130 Ø 12.5, 3 N131 Ø 12.5, 3 N132 Ø 12.5, 3 N133 Ø 12.5, 3 N134 Ø 12.5, 3 N135 Ø 12.5, 3 N136 Ø 12.5, 3 N137 Ø 12.5, 3 N138 Ø 12.5, 3 N139 Ø 12.5, 3 N140 Ø 12.5, 3 N141 Ø 12.5, 3 N142 Ø 12.5, 3 N143 Ø 12.5, 3 N144 Ø 12.5, 3 N145 Ø 12.5, 3 N146 Ø 12.5, 3 N147 Ø 12.5, 3 N148 Ø 12.5, 3 N149 Ø 12.5, 3 N150 Ø 12.5, 3 N151 Ø 12.5, 3 N152 Ø 12.5, 3 N153 Ø 12.5, 3 N154 Ø 12.5, 3 N155 Ø 12.5, 3 N156 Ø 12.5, 3 N157 Ø 12.5, 3 N158 Ø 12.5, 3 N159 Ø 12.5, 3 N160 Ø 12.5, 3 N161 Ø 12.5, 3 N162 Ø 12.5, 3 N163 Ø 12.5, 3 N164 Ø 12.5, 3 N165 Ø 12.5, 3 N166 Ø 12.5, 3 N167 Ø 12.5, 3 N168 Ø 12.5, 3 N169 Ø 12.5, 3 N170 Ø 12.5, 3 N171 Ø 12.5, 3 N172 Ø 12.5, 3 N173 Ø 12.5, 3 N174 Ø 12.5, 3 N175 Ø 12.5, 3 N176 Ø 12.5, 3 N177 Ø 12.5, 3 N178 Ø 12.5, 3 N179 Ø 12.5, 3 N180 Ø 12.5, 3 N181 Ø 12.5, 3 N182 Ø 12.5, 3 N183 Ø 12.5, 3 N184 Ø 12.5, 3 N185 Ø 12.5, 3 N186 Ø 12.5, 3 N187 Ø 12.5, 3 N188 Ø 12.5, 3 N189 Ø 12.5, 3 N190 Ø 12.5, 3 N191 Ø 12.5, 3 N192 Ø 12.5, 3 N193 Ø 12.5, 3 N194 Ø 12.5, 3 N195 Ø 12.5, 3 N196 Ø 12.5, 3 N197 Ø 12.5, 3 N198 Ø 12.5, 3 N199 Ø 12.5, 3 N200 Ø 12.5, 3 N201 Ø 12.5, 3 N202 Ø 12.5, 3 N203 Ø 12.5, 3 N204 Ø 12.5, 3 N205 Ø 12.5, 3 N206 Ø 12.5, 3 N207 Ø 12.5, 3 N208 Ø 12.5, 3 N209 Ø 12.5, 3 N210 Ø 12.5, 3 N211 Ø 12.5, 3 N212 Ø 12.5, 3 N213 Ø 12.5, 3 N214 Ø 12.5, 3 N215 Ø 12.5, 3 N216 Ø 12.5, 3 N217 Ø 12.5, 3 N218 Ø 12.5, 3 N219 Ø 12.5, 3 N220 Ø 12.5, 3 N221 Ø 12.5, 3 N222 Ø 12.5, 3 N223 Ø 12.5, 3 N224 Ø 12.5, 3 N225 Ø 12.5, 3 N226 Ø 12.5, 3 N227 Ø 12.5, 3 N228 Ø 12.5, 3 N229 Ø 12.5, 3 N230 Ø 12.5, 3 N231 Ø 12.5, 3 N232 Ø 12.5, 3 N233 Ø 12.5, 3 N234 Ø 12.5, 3 N235 Ø 12.5, 3 N236 Ø 12.5, 3 N237 Ø 12.5, 3 N238 Ø 12.5, 3 N239 Ø 12.5, 3 N240 Ø 12.5, 3 N241 Ø 12.5, 3 N242 Ø 12.5, 3 N243 Ø 12.5, 3 N244 Ø 12.5, 3 N245 Ø 12.5, 3 N246 Ø 12.5, 3 N247 Ø 12.5, 3 N248 Ø 12.5, 3 N249 Ø 12.5, 3 N250 Ø 12.5, 3 N251 Ø 12.5, 3 N252 Ø 12.5, 3 N253 Ø 12.5, 3 N254 Ø 12.5, 3 N255 Ø 12.5, 3 N256 Ø 12.5, 3 N257 Ø 12.5, 3 N258 Ø 12.5, 3 N259 Ø 12.5, 3 N260 Ø 12.5, 3 N261 Ø 12.5, 3 N262 Ø 12.5, 3 N263 Ø 12.5, 3 N264 Ø 12.5, 3 N265 Ø 12.5, 3 N266 Ø 12.5, 3 N267 Ø 12.5, 3 N268 Ø 12.5, 3 N269 Ø 12.5, 3 N270 Ø 12.5, 3 N271 Ø 12.5, 3 N272 Ø 12.5, 3 N273 Ø 12.5, 3 N274 Ø 12.5, 3 N275 Ø 12.5, 3 N276 Ø 12.5, 3 N277 Ø 12.5, 3 N278 Ø 12.5, 3 N279 Ø 12.5, 3 N280 Ø 12.5, 3 N281 Ø 12.5, 3 N282 Ø 12.5, 3 N283 Ø 12.5, 3 N284 Ø 12.5, 3 N285 Ø 12.5, 3 N286 Ø 12.5, 3 N287 Ø 12.5, 3 N288 Ø 12.5, 3 N289 Ø 12.5, 3 N290 Ø 12.5, 3 N291 Ø 12.5, 3 N292 Ø 12.5, 3 N293 Ø 12.5, 3 N294 Ø 12.5, 3 N295 Ø 12.5, 3 N296 Ø 12.5, 3 N297 Ø 12.5, 3 N298 Ø 12.5, 3 N299 Ø 12.5, 3 N300 Ø 12.5, 3 N301 Ø 12.5, 3 N302 Ø 12.5, 3 N303 Ø 12.5, 3 N304 Ø 12.5, 3 N305 Ø 12.5, 3 N306 Ø 12.5, 3 N307 Ø 12.5, 3 N308 Ø 12.5, 3 N309 Ø 12.5, 3 N310 Ø 12.5, 3 N311 Ø 12.5, 3 N312 Ø 12.5, 3 N313 Ø 12.5, 3 N314 Ø 12.5,

[illegible]

Technical drawing of a mechanical part, showing a side view and a cross-section A-A.

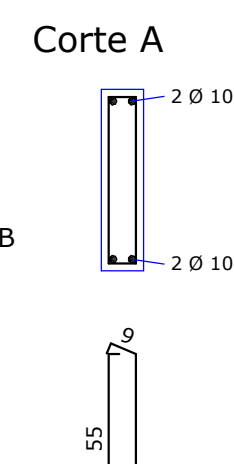
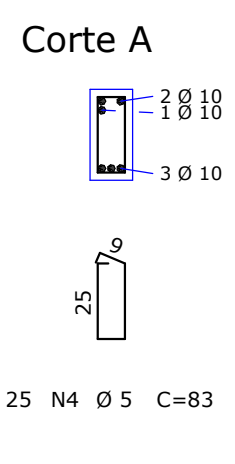
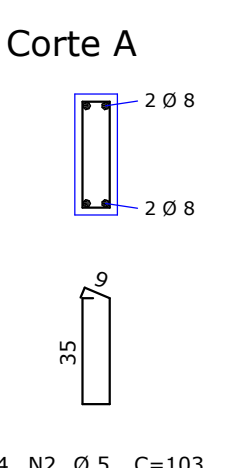
Side View Dimensions:

- Total length: 140 mm
- Central hole diameter: 14 mm
- Hole offset from left edge: 20 mm
- Top flange label: B34A
- Bottom flange label: B27B

Cross-section A-A:

- Height: 9 mm
- Width: 14 mm

Material: 14 N2 Ø 5 C=103



	ACO	POS	BIT	QUANT	COMPLEMENT	TOTAL
			mm	UNIT	UNIT	
V115B	SOA	1	6.3	2	375	750
	SOA	2	12.5	5	638	1275
	SOA	3	12.5	5	850	1700
	SOA	4	10	5	613	1065
	SOA	5	6	5	762	1524
	SOA	6	10	2	488	976
	SOA	7	10	2	544	1028
	60B	9	5	55	143	286
	60B	9	5	55	143	286
	SOA	11	10	3	173	519
V116B	SOA	1	10	2	1200	2400
	SOA	2	8	4	1313	2522
	SOA	3	10	2	700	1400
	SOA	4	10	1	481	481
	SOA	5	6	65	2665	6665
	SOA	6	10	3	485	1455
	SOA	7	8	3	365	730
	SOA	8	10	4	855	2420
	SOA	9	10	2	518	1154
	SOA	10	10	2	383	766
	SOA	11	10	2	331	1062
	SOA	12	10	2	346	692
	SOA	13	10	4	720	2880
	SOA	14	10	1	481	481
	SOA	15	10	1	355	355
V117B	SOA	16	10	2	520	1040
	SOA	17	10	3	540	1620
	SOA	18	5	5	2633	1433
	SOA	1	10	4	630	2520
	SOA	2	10	3	567	1701
V118B	60B	3	5	18	123	224
	SOA	1	5	3	226	678
	SOA	2	5	5	9	83
V119B	60B	3	5	9	83	747
	SOA	1	8	2	577	1154
	SOA	2	10	2	840	1680
	SOA	3	8	2	790	1580
	SOA	4	5	2	220	440
	SOA	5	8	5	260	260
	SOA	6	10	2	520	1040
	SOA	7	10	3	355	355
V120B	SOA	8	8	2	580	1160
	SOA	9	8	10	1620	1620
	SOA	10	10	2	425	850
	SOA	11	5	5	107	103
	60B	11	5	5	225	450
V121B	SOA	2	84	5	684	528
	SOA	3	10	2	451	902
	SOA	4	10	3	153	1545
	SOA	5	10	3	310	620
V122B	SOA	1	5	2	380	760
	SOA	2	10	5	613	2065
	SOA	3	12.5	5	1230	1230
	SOA	4	10	2	520	1040
	SOA	5	10	2	521	1042
	SOA	6	10	3	466	1038
	SOA	7	12.5	5	39	165
	SOA	8	5	39	165	6435
	SOA	10	12.5	5	38	540
	SOA	1	5	2	355	710
	SOA	2	10	2	910	1820
	SOA	3	5	2	355	710
V123B	SOA	4	10	2	325	325
	SOA	5	6.3	4	295	1180
	SOA	6	10	2	470	940
	SOA	7	10	2	450	900
	SOA	8	10	2	330	660
	SOA	9	10	2	320	640
	SOA	10	10	2	545	1090
	SOA	11	10	2	415	1245
	SOA	12	10	2	1200	1200
	SOA	13	10	2	385	770
	SOA	14	10	2	715	1430
	SOA	15	10	1	410	410
	SOA	16	10	5	630	3150
	SOA	17	10	1	365	365
	SOA	18	10	2	428	856
V124B	SOA	14B	14.3	2	2166	2166
	SOA	15B	14.3	2	2166	2166

V123B	60B	1	2	5	2	300	600
	50A	2	12	5	3	155	465
	50A	3	12	15	2	445	890
	50A	4	10	1	280	280	280
	50A	5	6	3	1	65	65
	60B	6	5	27	103	2781	
V124B	50A	1	8	5	4	377	1508
	50A	2	5	14		1033	1442
V125B	60B	1	5	2	250	500	
	50A	2	10	3	252	756	
	50A	3	10	3	470	1410	
	60B	4	5	25	83	2075	

1. UNIDADES EM CENTÍMETROS, NÍVEIS EM METROS, EXCETO ONDE INDICADO O CONTRÁRIO;
2. ESTE PROJETO ATENDE ÀS ESPECIFICAÇÕES DA NORMA NBR-6118:2014;
3. AS ARMADURAS DEVEM ESTAR LIMPAS, DE ACORDO COM O QUE SE ESTABELEÇA NAS NORMAS DE EXECUÇÃO, COM AS FERRAGENS DEVIDAMENTE POSICIONADAS CONFORME INDICA O PROJETO, UTILIZANDO-SE DE CILINDROS E ESPACIADORES ADEQUADOS, GARANTINDO OS COBRIMENTOS;
4. ACOS: C_{50} (V $\geq 50MPa$) / C_{60} (V $\geq 60MPa$);
5. PREVER INSERIS METÁLICOS PARA FIXAÇÃO DA ESTRUTURA METÁLICA, NOS ELEMENTOS PERTINENTES (VER PROJETO DE ESTRUTURA METÁLICA);
6. DEMAIS CONSIDERAÇÕES VIDE PLANILHA DE FORMAS;
7. TODAS AS MEDIDAS E DIMENSÕES DEVEM SER CONFERIDAS NA OBRA.

COBRIMENTOS MÍNIMOS	
ELEMENTOS	VALORES (cm)
VIGAS E PILARES	2,5
LAJES	2,0
FUNDAÇÕES	2,5

000	36/09/2021	EMISSÃO FISCAL	ISSUATO
R00	REVISÃO	DATA	ASSINATURA
REVISÃO EMISSÃO E INSCRIÇÃO EM LOTA - 167 Rua Ferreira Costa, 369 - 4.º andar - Lapa - Rio de Janeiro - RJ - CEP 20030-700 Fone/Fax (21) 3328 1021 - E-mail: mp@petrolbras.com.br - Web: www.petrobras.com.br			
Notas em português: O valor da CONTRATO deste PROJETO É PROPRIEDADE INTELECTUAL DA EMPRESA - DIREITOS AUTORAIS RESERVADOS		O valor do CONTRATO deste PROJETO É PROPRIEDADE INTELECTUAL DA EMPRESA - DIREITOS AUTORAIS RESERVADOS	
"TINHO F.S. XAVIER" Assinatura do Responsável Técnico INSC. FISCAL Nº 150.976.976-00 ENG. CIVIL OAB RJ 198.155-5			
 100% Autarquia e Planificação Lda - EPP			
PROJETO ESTRUTURAL Obra: MUNICÍPIO DE PRONTO SOCORRO - HRPS Local: MUNICÍPIO DE PELOTAS Local: AV. BENTO GONÇALVES, Nº 4590 - PELOTAS-RS Arquivo: ARMADOURAS Bloco B - VIGAS (3/30) Origem Cota: 554 Descrição: P.V.F Cotação: 554 HPS-PE-ESTR.243-ARM.B.B.VIGO_R00			
PREÇO: EC 243			Data de Emissão: 16/09/2021